

**BLACK & WHITE**

# BLACK

# &

# WHITE

## ZIG - ZAG

### TECHNICAL INFORMATION

**Composition:** 100% Natural Cotton

**Elaboration:** "Loop" handmade technique

**Color:** Black and Beige

**Design:** Zig-Zag stripes in black and beige

**Size:** 140 x 200 cm / 80 x 230 cm

**Weight:** 5 Kg (140 x 200 cm) / 3'2 Kg (80 x 230 cm)



140 x 200 cm  
C-BW-ZIGZAG



80 x 230 cm  
C-BW-ZIGZAG-P

## PINEAPPLE

### TECHNICAL INFORMATION

**Composition:** 100% Natural Cotton

**Elaboration:** "Loop" handmade technique

**Color:** Black and Beige

**Design:** Pineapple Stamp in the center of the rug

**Size:** 140 x 200 / 80 x 230

**Weight:** 5 Kg (140 x 200 cm) / 3'2 Kg (80 x 230 cm)



140 x 200 cm  
C-BW-PINEAPPLE



80 x 230 cm  
C-BW-PINEAPPLE-P

## DIAMONDS

### TECHNICAL INFORMATION

**Composition:** 100% Natural Cotton

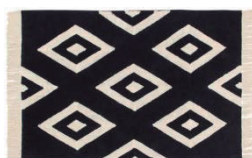
**Elaboration:** "Loop" handmade technique

**Color:** Black and Beige

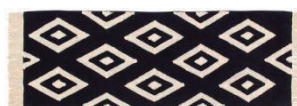
**Design:** Beige diamonds in a black base

**Size:** 140 x 200 cm / 80 x 230 cm

**Weight:** 5 Kg (140 x 200 cm) / 3'2 Kg (80 x 230 cm)



140 x 200 cm  
C-BW-DIAMONDS



80 x 230 cm  
C-BW-DIAMONDS-P

## BEREBER BLACK

### TECHNICAL INFORMATION

**Composition:** 100% Natural Cotton

**Elaboration:** "Loop" handmade technique

**Color:** Black and Beige

**Design:** Berber design with braided fringe

**Size:** 140 x 200 / 80 x 230

**Weight:** 5 Kg (140 x 200 cm) / 3'2 Kg (80 x 230 cm)



140 x 200 cm  
C-BW-BEREBER-BLACK



80 x 230 cm  
C-BW-BEREBER-BLACK

## CACTUS STAMP

### TECHNICAL INFORMATION

**Composition:** 100% Natural Cotton

**Elaboration:** "Loop" handmade technique

**Color:** Black and Beige

**Design:** Beige cactuses in a black base

**Size:** 140 x 200 cm / 80 x 230 cm

**Weight:** 5 Kg (140 x 200 cm) / 3'2 Kg (80 x 230 cm)



140 x 200 cm  
C-BW-CACTUS



80 x 230 cm  
C-BW-CACTUS-P

## BEREBER BEIGE

### TECHNICAL INFORMATION

**Composition:** 100% Natural Cotton

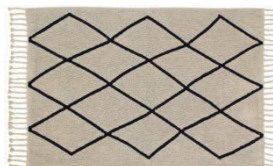
**Elaboration:** "Loop" handmade technique

**Color:** Black and Beige

**Design:** Berber design with braided fringe

**Size:** 140 x 200 / 80 x 230

**Weight:** 5 Kg (140 x 200 cm) / 3'2 Kg (80 x 230 cm)



140 x 200 cm  
C-BW-BEREBER-BEIGE



80 x 230 cm  
C-BW-BEREBER-BEIGE-P

## Selling Tips

- 6 original designs in black and white for **trendy and modern** environments: classic bereber, cactus, pineapple, zig-zag and diamonds.
- These references match in any **home decoration**, as well as for children and teenagers.
- **New size** for corridors: 80 x 230 cm.
- Their basic colors are really **easy to match** with other accessories.
- You can place **different designs in black and white** to create an inviting atmosphere.
- **Thicker base** than other collections which makes them heavier.
- **New kind of fringe** in the "Bereber" design. The cotton is braided by hand.
- **They are washable:** there is no problem if they get dirty, because you can wash them at home.
- **They are safe:** you can keep them always clean, so children can be in direct contact with the rug.
- They are **handmade** by a technique called "Loop". Every rug is elaborated carefully and individually, so each one is unique. **No two are alike.**
- They are **soft, cozy** and bring warmth to any room. They are fresh in summer and warm in winter.
- They are lightweight (compared to traditional rugs) so we can **easily move** them from place to place.
- Lorena Canals is the **leading brand** in the market of children's rugs.
- Lorena Canals is the **pioneer of the concept of washable rugs**, which has revolutionized the rugs sector and has been gladly accepted by an increasingly practical and demanding society.
- Lorena Canals offers the **optimum cost-benefit ratio.**
- The brand has also at your disposal **anti-slip underlays** for the washable carpets.
- Lorena Canals is **environmentally responsible.** Non-toxic dyes and 100% natural raw materials are used.
- Lorena Canals undergoes extensive **quality controls.** ISO 9001, ISO 14001, ISO 18001 and AITEX certificates obtained.
- Lorena Canals is **socially responsible** and controls non-child labor. The company does not employ child labor in none of its activities.
- With the profits from sales, Lorena Canals finances the **education** of over 100 children in northern India, giving them the opportunity to decide their future. By purchasing their rugs **you are helping Indian kids to go to school.** Discover the **Sakula Project** by Lorena Canals.

